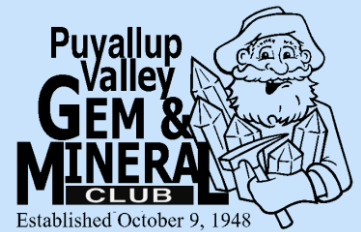


ROCK-A-TEER



Newsletter of the Puyallup Valley Gem & Mineral Club

Jillian Higgins

Issue 82

Volume 134

November

2024

THIS ISSUE

President's Perspective P.2
Field Trip Report P.2
November Club House Schedule P.3
Membership Renewal P.5
Associations Director Report P.5
Article: Ilmenite P.5-9
Field Trip Recap P.10
Community Supporters P.10
Sunshine Report & Mineral of the Month P.11
From the Bench P.11
Clubhouse Report P.12
Local Area Shows P.12
2024 Show and Tell P.13
2024 Officers and Chairs P.14
Word Search & Happy Birthdays P.15

P.O. BOX 134, PUYALLUP, WA 98371

WWW.PUYALLUPVALLEYGEMANDMINERAL.CLUB.COM

PVGAMC@GMAIL.COM

(253) 987-6751

President's Perspective

Tony Johnson

Thank you to everyone who helped out at the auction. The food was really good, and we had a lot of deserts. I also want to say thank you to everyone who donate material and helped us raise a lot of money for our scholarship fund. The potluck was amazing and we had a wonderful turnout and the kids seemed to have a wonderful time.

We are getting close to the end of the year, so it is time to renew your membership if you are planning on maintaining your membership for 2025. You can apply online through our website, you can mail it in to the addresses on the applications, or you can come to a meeting and give it to the membership director or any board member.

This upcoming Business meeting is an important one. We are voting on the 2025 Board of Directors, and our Man and Woman of the year. Please make sure if you have someone you would like to nominate, get the recommendation emailed in to the club emailed address PVGAMC@gmail.com. The comments will be read anonymously, so don't be concerned if you would like to remain nameless.

Field Trip Report

November 16th – Twin Rivers (Joyce)

Meeting place - 10:00Aam Joyce General Store on Hwy 112

Hunting for – Concretions

Tools you need - Rock hammer, shovel, hammer, backpack/bucket for your treasures

Access - easy terrain, based on the tides

Additional items - lunch/snacks and water, water, water. Dress for wet weather in layers

December 21st - Rice Museum

Meeting place - 26385 Northwest Groveland Dr., Hillsboro, OR 97124

Hunting for - Rock pile for children to prospect a specimen, Looking at museum displays

Tools you need - Camera if you would like to take pictures

Access - Wheel chair accessible

Additional items - lunch/snacks and water, water, water. Dress in layers. Well worth the trip with displays of all kinds of minerals from the northwest

Please remember that even though we love to meet new people, fieldtrips are a member benefit and part of your membership dues covers you for injury liability.

Though injuries are rare, and we do everything we can to avoid them, we are going out into nature, and uncontrollable environment.

All individuals attending field trips will have to sign a release of liability, and if you are bringing guests, we will try to entice them into join the club by having Membership applications available.

NOVEMBER 2024 CLUB HOUSE SCHEDULE

| DATE | DAY | TIME | ACTIVITY | LOCATION | INSTRUCTOR |
|------|-----------|----------------------|--------------------------------|------------------|------------------|
| 1 | Friday | | | | |
| 2 | Saturday | 10:00AM-2:00PM | Members Open Access | Club House | Tony Johnson |
| 3 | Sunday | | | | |
| 4 | Monday | 10:00AM-2:00PM | Members Open Access | Club House | Tacha Parker |
| 5 | Tuesday | 4:00PM-8:00PM | Members Open Access - Beginner | Club House | Wes Ames |
| 6 | Wednesday | 10:00AM-2:00PM | Members Open Access | Club House | Dennis Batchelor |
| | | 4:00PM-8:00PM | Members Open Access | Club House | Tony Johnson |
| 7 | Thursday | 4:00PM-8:00PM | Members Open Access | Club House | Tony Johnson |
| 8 | Friday | 6:00PM | Club Board Meeting | Fruitland Grange | Dennis Batchelor |
| | | 7:30PM | Club Business Meeting | Fruitland Grange | Tony Johnson |
| 9 | Saturday | 10:00AM-2:00PM | Wire Weaving | Club House | Jillian Higgins |
| 10 | Sunday | | | | |
| 11 | Monday | 10:00AM-2:00PM | Members Open Access | Club House | Tacha Parker |
| | | 7:00PM-8:00PM | Opal Club Business Meeting | Club House | Tony Johnson |
| 12 | Tuesday | 4:00PM-8:00PM | Members Open Access - Beginner | Club House | Wes Ames |
| 13 | Wednesday | 10:00AM-2:00PM | Members Open Access | Club House | Dennis Batchelor |
| | | 4:00PM-8:00PM | Wire Wrapping | Club House | Tony Johnson |
| 14 | Thursday | 4:00PM-8:00PM | Members Open Access | Club House | Tony Johnson |
| 15 | Friday | | | | |
| 16 | Saturday | 10:00AM-2:00PM | Members Open Access | Club House | Tony Johnson |
| | | See Fieldtrip Report | Twin Rivers (Joyce) | Field Trip | Nate White |
| 17 | Sunday | | | | |
| 18 | Monday | 10:00AM-2:00PM | Members Open Access | Club House | Tacha Parker |
| 19 | Tuesday | 4:00PM-8:00PM | Members Open Access - Beginner | Club House | Wes Ames |
| 20 | Wednesday | 10:00AM-2:00PM | Members Open Access | Club House | Dennis Batchelor |
| | | 4:00PM-8:00PM | Opal Cutting | Club House | Tony Johnson |
| 21 | Thursday | | THANKSGIVING CLOSED | | |
| 22 | Friday | 7:30PM | Bingo Night | Fruitland Grange | Tony Johnson |
| 23 | Saturday | 10:00AM-2:00PM | Intarsia | Club House | Tony Johnson |
| 24 | Sunday | | | | |
| 25 | Monday | 10:00AM-2:00PM | Members Open Access | Club House | Tacha Parker |
| 26 | Tuesday | 4:00PM-8:00PM | Members Open Access - Beginner | Club House | Wes Ames |
| 27 | Wednesday | 10:00AM-2:00PM | Members Open Access | Club House | Dennis Batchelor |
| | | 4:00PM-8:00PM | Members Open Access | Club House | Tony Johnson |
| 28 | Thursday | 4:00PM-8:00PM | Members Open Access | Club House | Tony Johnson |
| 29 | Friday | | | | |
| 30 | Saturday | 10:00AM-2:00PM | Opal Cutting | Club House | Tony Johnson |

For questions about a specific class or event, contact the instructor

| | | |
|---------------------------------|---------------------------|--------------------------------|
| Dennis Batchelor (360) 870-8741 | Wes Ames (253) 376-7871 | Tony Johnson (253) 753-5938 |
| Tasha Parker (206) 291-8068 | Nate White (206) 349-7054 | Jillian Higgins (253) 355-3146 |

*** **Members Open Access** is the time when members can use the saws and cabbng machines

This schedule is subject to change. Please check the club website for updated information.

Puyallup Valley Gem & Mineral Club

Membership Renewal

*** PLEASE PRINT LEGIBLY ***

Web Site: <http://puyallupvalleygemandmineralclub.com>

ANNUAL MEMBERSHIP DUES: ▶ Single - \$25.00 ▶ Family (2 or more) - \$30.00

[Dues are due October 1st for the next calendar year and half price beginning July 1st for the current year]

YEAR: **2025**

FOR FAMILY MEMBERSHIPS, ALL INDIVIDUALS MUST LIVE AT THE SAME RESIDENCE

SINGLE RENEWAL

FAMILY RENEWAL

PRINT YOUR FIRST AND LAST NAME: _____ DATE OF BIRTH: _____

NOTE ANY CHANGES OF ADDRESS, PHONE, EMAIL, ETC, BELOW. IF SAME AS LAST YEAR, JUST CIRCLE "SAME"
IF YOU CIRCLE "NEW", PLEASE ENTER THE NEW INFORMATION BELOW.

ADDRESS: (CIRCLE ONE) **SAME OR NEW**: _____

PHONE: (CIRCLE ONE) **SAME OR NEW**: _____

EMAIL: (CIRCLE ONE) **SAME OR NEW**: _____

OTHER: (CIRCLE ONE) **SAME OR NEW**: _____

FOR FAMILY MEMBERSHIP, CONFIRM/NAME OTHER FAMILY MEMBERS BELOW AND CIRCLE 'ADULT' OR 'CHILD' (under 18)

(Circle one) **Adult OR Child** _____ DATE OF BIRTH: ____/____/____

(Circle one) **Adult OR Child** _____ DATE OF BIRTH: ____/____/____

(Circle one) **Adult OR Child** _____ DATE OF BIRTH: ____/____/____

Please let the Membership Chairperson know as soon as any changes occur in the above information!

Names, addresses and phone numbers are provided to the Club Treasurer, Membership Chairperson and Board Members.

>>OTHER THAN THE ABOVE, PVG&MC DOES NOT SHARE YOUR PERSONAL INFORMATION<<

Give this completed form and your payment to the Treasurer or mail to: **PVG&MC, P.O. Box 134, Puyallup, WA 98371**

For Expedited processing mail to: Jillian Higgins c/o PVG&MC, 22509 120th St. Ct. E. Bonney Lake, WA 98391

*** NEVER SEND CASH THROUGH THE MAIL *** **Make checks payable to: PVG&MC** ***

[Upon receipt of this form with payment, a membership card will be created for you and be available by email, or mailed upon request.]

As a member of the Puyallup Valley Gem & Mineral Club, I agree to abide by the rules of the Rock Hounding Code of Ethics, the Standard Operating Procedures, and the BY-LAWS of the Puyallup Valley Gem & Mineral Club.

Member's Signature: _____ Date: _____

Official Use Only: Membership #: _____ Card Issue Date: ____/____/____ Roster Entry Date: ____/____/____
Amount: \$ _____ Cash Check [# _____] Credit Card Receiver's Initials: _____ Email Date: ____/____/____

Associations Director Report

Hello my fellow rockhounds and pebblepups.

Fall has definitely with a nip in the air and leaves falling to the ground. It is also the hunting season and it isn't a bad idea to wear an outer garment above the waist in either blaze orange (fluorescent orange) or hunter safety green (fluorescent chartreuse). It is better to be safe than sorry.

The Washington State Mineral Council (WSMC) met on Tuesday 10/15. Not too much to report other than they are going to print more of their map books, seems they've been selling out. If you would like your own copy talk to a board member at one of our next meetings and for a mere \$20, we will hook you up. The WSCMC is looking for anyone who is interested in updating the map book with some new sites and G.P.S. coordinates. If you are interested, please contact me. The next WSMC meeting will be at the Maplewood Clubhouse in Edmond on 01/21/2025 at 7:00 PM.

There isn't a lot going on with our state or federal legislatures other than concentrating on the upcoming elections. I do encourage everyone that can to vote.

Now for some Washington State mineral related facts:

1. Washington is ranked 9th in gold production.
2. Washington is ranked 18th in silver production.
3. Washington has 700 million tons of estimated recoverable coal reserves but there are no longer any active coal mines in the state. The last one closed in 2006.
4. Washington's state gemstone is petrified wood. Our fossilized wood was formed about 15 million years ago making it one of the youngest petrified woods in North America.
5. Washington is home to the third rarest gemstone on the planet, Ellensburg Blue Agate.
6. Washington has neither a state rock nor a state mineral.

That's it for now.

Respectfully submitted by,
Mark Baumann

PVG&MC Associations Director

Ilmenite

A black iron titanium oxide mineral. The primary ore of titanium, source of titanium dioxide.

Article by: [Hobart M. King](#), PhD, RPG



Ilmenite: A specimen of massive ilmenite from Saint-Urbain, Quebec, Canada. Massive ilmenite can be formed as a vein-filling material or during magmatic segregation. This specimen is approximately 4 inches (10 centimeters) across.

Ilmenite is a common accessory [mineral](#) in [igneous rocks](#), sediments, and [sedimentary rocks](#) in many parts of the world. Apollo astronauts found abundant

© geology.com

ilmenite in lunar rocks and the lunar regolith. Ilmenite is a black iron-titanium oxide with a chemical composition of FeTiO_3 .

Ilmenite is the primary ore of [titanium](#), a [metal](#) needed to make a variety of high-performance alloys. Most of the ilmenite mined worldwide is used to manufacture titanium dioxide, TiO_2 , an important pigment, whiting, and polishing abrasive.



Heavy Mineral Sand: Shallow digging at Folly Beach, South Carolina, exposes thin layers of heavy-mineral sands. Most of the ilmenite mined today is from sands with a heavy mineral concentration. Photograph by Carleton Bern, United States Geological Survey.

Mining Heavy Minerals: Excavators remove heavy mineral sands at the Concord Mine in south-central Virginia. Weakly consolidated sands containing about 4% heavy minerals are excavated and

processed to remove ilmenite, leucoxene, rutile, and zircon. The sands were weathered and eroded from an anorthosite exposure a short distance away. Photo by the United States Geological Survey.

Most ilmenite forms during the slow cooling of [magma chambers](#) and is concentrated through the process of magmatic segregation. A large underground magma chamber can take centuries to cool. As it cools, crystals of ilmenite will begin forming at a specific temperature. These crystals are heavier than the surrounding melt and sink to the bottom of the magma chamber.

This causes ilmenite and similar-temperature minerals, such as [magnetite](#), to accumulate in a layer at the bottom of the magma chamber. These ilmenite-bearing [rocks](#) are often [gabbro](#), norite, or anorthosite. Ilmenite also crystallizes in veins and cavities and sometimes occurs as well-formed crystals in [pegmatites](#).

Ilmenite has a high resistance to weathering. When rocks containing ilmenite weather, grains of ilmenite disperse with the sediment. The high specific gravity of these grains causes them to segregate during stream transport and accumulate as "heavy mineral sands."

These [sands](#) are black in color and easily recognized by geologists. "Black sand prospecting" has long been a method of finding heavy mineral placer deposits. Most commercially produced ilmenite is recovered by excavating or dredging these sands, which are then processed to remove the heavy mineral grains such as ilmenite, leucoxene, [rutile](#), and [zircon](#).





Ilmenite: A specimen of massive ilmenite from Normanville, South Australia. Specimen is approximately 3 inches (7.6 centimeters) across.



Ilmenite's ideal chemical composition is FeTiO_3 . However, it often departs from that composition by containing variable amounts of magnesium or manganese. These elements substitute for iron in complete solid solution. A solid solution series exists between ilmenite (FeTiO_3) and geikielite (MgTiO_3). In this series, variable amounts of magnesium substitutes for iron in the mineral's crystal structure. A second solid solution series exists between ilmenite and pyrophanite (MnTiO_3), with [manganese](#) substituting for iron. At high temperatures, a third solid solution series exists between ilmenite and hematite (Fe_2O_3).

Ilmenite: A specimen of massive ilmenite from Kragero, Norway. Specimen is approximately 4 inches (10 centimeters) across.



Black Sand Ilmenite: Ilmenite sand from Melbourne, Florida. Specimens are sand-size grains.

Ilmenite is a black mineral with a submetallic to metallic [luster](#). With just a glance it can easily be confused with [hematite](#) and [magnetite](#). The differentiation is easy. Hematite has a red [streak](#), while ilmenite has a black streak. Magnetite is strongly magnetic, while ilmenite is not magnetic. Occasionally ilmenite is weakly magnetic, possibly from small amounts of included magnetite.

Physical Properties of Ilmenite

Chemical
Classification
Color

Oxide
Black

| | |
|-----------------------|--|
| Streak | Black |
| Luster | Metallic, submetallic |
| Diaphaneity | Opaque |
| Cleavage | None |
| Mohs Hardness | 5.5 to 6 |
| Specific Gravity | 4.7 to 4.8 |
| Diagnostic Properties | Streak; sometimes weakly magnetic. |
| Chemical Composition | Iron titanium oxide - FeTiO_3 . Sometimes has significant amounts of magnesium and manganese in solid solution with the iron to yield a composition of $(\text{Fe,Mg,Mn})\text{TiO}_3$ |
| Crystal System | Trigonal |
| Uses | The primary ore of titanium. A minor source of iron. Used to make titanium dioxide. |

Ilmenite is usually more durable than the other minerals in the igneous rocks in which it is abundant. For that reason, the weathering debris produced during the weathering of these rocks is especially rich in ilmenite. Its relatively high specific gravity causes it to become concentrated in placer deposits like gold, gems, and other heavy minerals.



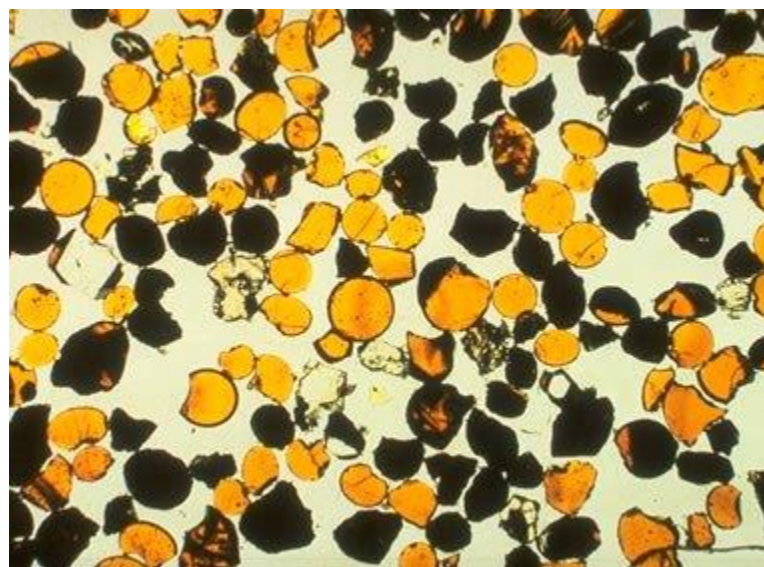
Pigments and Polishing Compounds: Titanium dioxide powder is carefully processed to remove impurities and classified by particle size. It is then sold for use as whiting, pigments, and polishing compounds. The image is a [rock tumbler](#) barrel just opened with a thick white froth of metal oxide polish.

Lunar Ilmenite Basalt: Apollo astronauts found ilmenite-rich basalts at multiple locations on the Moon. The reference block at lower right is one cubic centimeter. Image by NASA.

Ilmenite is the primary ore of titanium metal. Small amounts of titanium combined with certain metals will produce durable, high-strength, lightweight alloys. These alloys are used to manufacture a wide variety high-performance parts and tools. Examples include: aircraft parts, artificial joints for humans, and sporting equipment such as bicycle frames. About 5% of the ilmenite mined is used to produce titanium metal. Some ilmenite is also used to produce synthetic [rutile](#), a form of titanium dioxide used to produce white, highly reflective pigments.

Most of the remaining ilmenite is used to make [titanium dioxide](#), an inert, white, highly reflective material. The most important use of titanium dioxide is as a whitening. Whitings are white, highly reflective materials that are ground to a powder and used as pigments. These pigments produce a white color and brightness in paint, paper, adhesives, plastics, toothpaste, and even food.

Titanium dioxide is also used to make powders with a tightly controlled particle size range. These powders are used as inexpensive polishing abrasives in a variety of lapidary work that includes [rock tumbling](#), lapping, capping, sphere making, and faceting. Titanium oxide abrasives are used in many other industries.



Lunar Ilmenite Regolith: Apollo astronauts found deposits of lunar regolith composed mostly of silt- to sand-size ilmenite (black) and mafic volcanic glass (orange). Image by NASA.

Apollo astronauts found ilmenite-rich [basalts](#) at multiple locations on the Moon. Most of these basalts were extremely old, forming at least 3 billion years ago. These rocks often contained over 10% titanium dioxide (TiO_2). Minerals present in these rocks were mostly [feldspars](#) and [pyroxenes](#), with ilmenite next in abundance.

Some samples of lunar regolith contained significant amounts of ilmenite. It occurred in particles ranging from fine silt to coarse sand. The ilmenite was thought to have been liberated from lunar basalts during impact events.

Samples of lunar regolith collected at Shorty Crater contained a mix of volcanic glass spheres and ilmenite grains. The deposit was stratified with a bottom layer composed mostly of ilmenite and other black opaque materials. This graded upwards to an upper layer, known as "orange soil," that was composed mostly of spherical-shaped beads of orange volcanic glass with minor amounts of ilmenite. The grains were mostly less than 1/2 millimeter in size. This regolith was thought to have been produced by fountaining volcanic eruptions during the early lunar history.

Field Trip Recap

Nate White



The weather was not cooperating at all for the field trip at the creek.

We had about 10 cars and about 15 people. There was quite a bit of rain and most of the riverbank was covered by high waters. There was very little space for people to Rockhound.

On top of all of the fisherman trying to get land for fishing as well. Some of the members were still able to find some good specimens even though there was very little space or rock beds to search.

Overall, it was very, very wet.

COMMUNITY SUPPORTERS



South Hill RV Sales

Offering the highest rated starter, midline, and high end towables and RVs at the lowest prices which has made us a top volume dealer in Washington state.

12414 Meridian East, Puyallup 98373
253-435-7751 or 866-435-7751
www.southhillrv.com



Rice Museum of Rocks & Minerals

To engage, inspire, and educate generations on the splendor and complexity of our Earth.

26385 NW Groveland Dr., Hillsboro, OR 97124
503-647-2418
Info@ricenorthwestmuseum.org
www.ricenorthwestmuseum.org

H & I Lapidary

Amber, Jewelry, Beads, Findings, Gemstones, Slabs, Rough Material, Fossils, and Aussie items.

Mike and LaVon Siperek
(253) 531-7294
4203 E 99th Street, Tacoma, WA 98446
Yankees_Diesel@comcast.net

SUNSHINE REPORT

With everything going on, we have started meeting again, but our attendance at the meetings is still low as members are staying safe. As a group we need to bring to each other's attention members who need healing thoughts or prayer sent their way.

If you know of anyone else who needs to be recognized in next months Sunshine Report , please email or call
Tony Johnson at ynotopals@outlook.com (253) 863-9238

MINERAL OF THE MONTH

What is this amazing pumpkin/squash colored stone? You might guess that this is Wolfinite because of the color and spray shape, but it is called Legrandite. This mineral is very rare and is the second secondary mineral I have featured this year. Just as a refresher, a secondary mineral is an oxidized mineral that forms from a primary mineral, in this case a zinc arsenate mineral. Why is Legrandite so rare? Because Arsenic bearing zinc, the primary deposit, is also very rare, so to have a secondary is even rarer. As far as we know, there are only two places in the world with this combination, New Jersey, USA and Mexico. Most of the world's specimens come from Mexico.



Legrandite is very brittle since it is a secondary and have a Mohs hardness of 4.5-5.0 making it very soft. Because of this there are very few large specimens. It gets its bright beautiful orange and yellow color from the amount of arsenic still remaining in after the oxidation.

FROM THE BENCH

This is going to be a 5-part series. If you wanted to print and tape them together, I bet they would look really good on the wall of your shop!

LAPS USED TO POLISH GEMS

Hardness 6 to 7 $\frac{1}{2}$ up to, not including 8.. (The usual group for faceters)

Prepare surface on 1200 or 3000 lap (3000 excellent!)

Polish laps: lucite, Pol-A-Gem cerium oxide & alumina,
tin/lead, tin, Fast Lap, Last Lap.

Agent; cerium oxide, alumina, diamond.

Mineral examples; andalusite, beryl, danburite, iolite,
Quartz, feldspar, tourmaline, topaz, zircon, garnet.

Synthetics; titania, alexandrium, glass, GGG, others.

Next month's segment: Hardness 8 to 9, to be continued...

Clubhouse report

Tony Johnson

We are getting close to the end of the year. Spots at the clubhouse are filling up fast, so make sure you are making your online reservations to secure your machines.

We had an amazing class with Dana James making holiday themed gem trees. They are perfect for Fall, Halloween, and even Christmas with variation to suit your personal taste. They would also make really cool Christmas gifts if you are looking for a unique idea.

The saws are still having little issues, here and there, but we are working on getting them fixed. Thank you to everyone for your patience while they get worked on.

The Council Reporter

Local Area Shows for 2024

| DATE & TIME | CLUB | SHOW | LOCATION |
|--|--|---|--|
| October 2024 4th 10am-6pm 5th 10am - 6pm 6th 10am—5pm | Portland Regional Rock and Gem Show | 44rd Annual \$7, under 12 free with adult | Wingspan Event Center 801 NE 34th Ave Hillsboro, OR |
| October 2024 5th 10am - 5pm 6th 10am—5pm | Marysville Rock and Gem club | 48th Rocktoberfest | Evergreen State Fairgrounds Display Bldg #500 14405 179th Ave SE Monroe, WA |
| October 2024 5th 10am - 6pm | Idaho Falls Gem & Mineral Society | 13th Annual show | Bonneville Co. Fairgrounds 1542 East 73rd South Idaho Fall, ID |
| October 2024 19th 10am—5pm 20th 10am—4pm | Hell’s Canyon Gem Club | Hell’s Canyon Annual Show \$5 for weekend | Nez Perce County Fair Build- ing 1229 Burrell Avenue Lewiston ID 83501 |
| November 2024 9th 9am - 5pm 10th 10am - 4pm | Skagit Rock & Gem Club | Treasures of the Earth | Sedro Woolley Eagles Hall 1000 Metcalf St. Sedro-Woolley, Washington |
| November 2024 16th 10am - 5pm 17th 10am - 5pm | Maplewood Rock and Gem Club | Annual Demonstration Show | Maplewood Rock and Gem Clubhouse 8802 196th ST SW Edmonds WA |
| November 2024 23rd 10am - 5pm 24th 10am - 5pm | Kitsap Mineral and Gem Society | Fall Festival of Gems | The President's Hall 1250 NW Fairgrounds Road Bremerton, WA |
| December 2024 7th 10am - 5pm 8th 10am - 5pm | Maplewood Rock and Gem Club | Annual Winter Bazaar | Maplewood Rock and Gem Clubhouse 8802 196th ST SW Edmonds WA |
| March 2025 29th 10am - 6pm 30th 10am - 5pm | Mt. Baker Rock & Gem Club | 63rd Annual Rock and Gem Show | Ferndale Pavilion 2007 Cherry Street Ferndale, Washington |

2024 SHOW & TELL THEMES and PROGRAM NIGHT EVENTS

| MEETING | DATE | SHOW & TELL THEME | PROGRAM NIGHT EVENT |
|-------------------------|--------------------|---|---|
| January - 1st Meeting | January 12, 2024 | Crystals or any field trip finds | |
| January - 2nd Meeting | January 26, 2024 | Last Years Purchase or any field trip finds | Field Trips |
| February - 1st Meeting | February 9, 2024 | Red & Pink or any field trip finds | |
| February - 2nd Meeting | February 23, 2024 | Hearts Made of Stone or any field trip finds | Carl Carlson |
| March - 1st Meeting | March 8, 2024 | Green or any field trip finds | |
| March - 2nd Meeting | March 22, 2024 | Geodes any field trip finds | Jerry's Rock Shop |
| April - 1st Meeting | April 12, 2024 | Obsidian or any field trip finds | |
| April - 2nd Meeting | April 26, 2024 | No Show & Tell | Auction/Potluck |
| May - 1st Meeting | May 10, 2024 | Thundereggs or any field trip finds | |
| May - 2nd Meeting | May 24, 2024 | No Show & Tell | Fluorescent Minerals |
| June - 1st Meeting | June 14, 2024 | Any Agates or any field trip finds | |
| June - 2nd Meeting | June 28, 2024 | No Show & Tell | Tailgate Party @ Grange Parking Lot |
| July - 1st Meeting | July 12, 2024 | Metals or any field trip finds | |
| July - 2nd Meeting | July 26, 2024 | No Show & Tell | Jerry's Rock Shop |
| August - 1st Meeting | August 9, 2024 | Jaspers or any field trip finds | |
| August - 2nd Meeting | August 24, 2024 | No Show & Tell | Picnic & Tailgate Party at club house on Saturday |
| September - 1st Meeting | September 13, 2024 | Gemstones or any field trip finds | |
| September - 2nd Meeting | September 27, 2024 | No Show & Tell | Mini Demonstration Day |
| October - 1st Meeting | October 11, 2024 | Opals or any field trip finds | |
| October - 2nd Meeting | October 25, 2024 | No Show & Tell | Auction/Potluck |
| November - 1st Meeting | November 8, 2024 | Serpentine/Jade or any field trip finds | |
| November - 2nd Meeting | November 22, 2024 | No Show & Tell | BINGO Night |
| December - 1st Meeting | December 14, 2024 | No Show & Tell | Holiday Banquet/Officer Installation on Saturday |
| December - 2nd Meeting | No Meeting | No Show & Tell | |

2024 Elected Officers

| Title | Name | Phone | Email |
|-----------------------|---------------------|---------------|-----------------------------|
| President: | Tony Johnson | (253)753-5938 | johnsontony068@gmail.com |
| Vice President: | Dennis Batchelor | (360)870-8741 | hobbyhorse51@gmail.com |
| Secretary: | Patti Dailey-Shives | (253)678-0029 | pattidailey28@gmail.com |
| Treasurer: | Jillian Higgins | (253)355-3146 | J.Y.Higgins@gmail.com |
| Association Director: | Mark Baumann | (253-310-5891 | rocksnreptiles4me@gmail.com |
| 1 Year Director: | Richard Yang | (208)596-8340 | ryang0711@gmail.com |
| 2 Year Director: | Tasha Parker | (206)291-8068 | surfange1830@gmail.com |
| 1 Year Trustee: | Nathan White | (206)349-7054 | nate.white77@gmail.com |
| 2 Year Trustee: | Glenn Rodrick | (253)531-4062 | gtrodi@comcast.net |

2024 Committee Chairs

| Title | Name | Phone | Email |
|-------------------------|-----------------|---------------|-----------------------------|
| Clubhouse Coordinator | Tony Johnson | (253)753-5938 | johnsontony068@gmail.com |
| Club Show Coordinator | Jillian Higgins | (253)355-3146 | J.Y.Higgins@gmail.com |
| Field Trips Coordinator | Nathan White | (206)349-7054 | nate.white77@gmail.com |
| Web Master | Jillian Higgins | (253)355-3146 | J.Y.Higgins@gmail.com |
| Editor/Communications | Jillian Higgins | (253)355-3146 | J.Y.Higgins@gmail.com |
| Membership | Jillian Higgins | (253)355-3146 | J.Y.Higgins@gmail.com |
| Sunshine | Tony Johnson | (253)753-5938 | johnsontony068@gmail.com |
| Newsletter | Jillian Higgins | (253)355-3146 | J.Y.Higgins@gmail.com |
| Mineral Council | Mark Baumann | (253-310-5891 | rocksnreptiles4me@gmail.com |



WASHINGTON STATE MINERAL COUNCIL

The Puyallup Valley Gem & Mineral Club is a member of the American Lands Access Association and the Washington State Mineral Council. You can find more information about the ALAA at: amlands.org or the WA Mineral Council at:

HAPPY BIRTHDAY

November 2024

- Kevin Zielinski – 1st
- Jeff Hochstrasser – 2nd
- David Jewell – 2nd
- Terry Wilson – 2nd
- Jon Reiber – 3rd
- Anel Vergara – 3rd
- Vivian Rody – 3rd
- Aya Saito Held – 4th
- Felecia Love – 4th
- Aurora Posante – 4th
- David Delpozzi – 5th
- Corynne Sperry – 5th
- Terra Perkins – 7th
- Kim Sirianni – 7th
- Mike ORourke – 9th
- Tim Kleefeld – 10th
- Patricia Milligan – 10th
- Tina Putman – 10th
- Jessica Deibert – 11th
- Jim Kesic – 12th
- Dennis Batchelor – 13th
- Janet Nix – 14th
- Bob Ballou – 16th
- Incia Owens – 16th
- Johanna Bender – 17th
- Caleb Charpentier – 17th
- Ethan Hauser – 17th
- Noah Hauser – 17th
- Ashley Sutton – 18th
- Mark Eberlein – 20th
- Sarah Kleefeld – 21st
- Brady Lindell – 21st
- Vernon Ng – 21st
- Rachel Redling-Nelson – 22nd
- Darcy Love – 23rd
- John McRae – 23rd
- Max Gosciniak – 24th
- Rob Hondel – 24th
- Vorian Armstrong – 25th
- Marcus Baker – 25th
- John Huber – 26th
- Chloe Lovre – 26th
- Jessica Velez – 26th
- Rick Mercurio – 27th
- Anita Hartmann – 28th
- Teresa Harris – 29th
- Kelli Roulette – 30th

BRING ON THE BLING

D E M A N T O I D T A B I A R A P
 T G A K O T E D L A R E M E A J A
 O A E U Y M M E R E D N O M A I D
 P R N N V A E N O C R I Z D S E P
 A N X Z H P N F I R E T E A S E A
 Z E R I A O G I H O E O N E P E R
 E T T T C N A R T N I I E R H F A
 T A E E A C I A O E Y T L I E E D
 I Q M E A M E T R I N E F H N T S
 S U T R Z L S M E T I R H P E N C
 U A P O D N A R E E S L L P L O H
 L M T P U U L P I I I Y H A I C A
 A A G S I R O D O I L E H S T O Y
 D R U A V I N D I C O L I T E R B
 N I T I N T O U R M A L I N E B U
 A N A D B
 W E T I R O V A S T M R
 L E N I P S E T I R D N A X E L A

- | | | |
|----------------|------------------|----------------|
| 1. ALEXANDRITE | 11. GARNET | 21. RUBY |
| 2. AMETHYST | 12. HELIODOR | 22. SAPPHIRE |
| 3. AMETRINE | 13. INDICOLITE | 23. SPHENE |
| 4. ANDALUSITE | 14. JADE | 24. SPINEL |
| 5. AQUAMARINE | 15. KUNZITE | 25. SUNSTONE |
| 6. BENITOITE | 16. KYANITE | 26. TANZANITE |
| 7. DEMANTOID | 17. NEPHRITE | 27. TOPAZ |
| 8. DIAMOND | 18. OPAL | 28. TOURMALINE |
| 9. DIASPORE | 19. PADPARADSCHA | 29. TSAVORITE |
| 10. EMERALD | 20. PARAIBA | 30. ZIRCON |



ROCK-A-TEER

Newsletter of Puyallup Valley

Gem & Mineral Club

P.O. Box 134

Puyallup, WA 98371