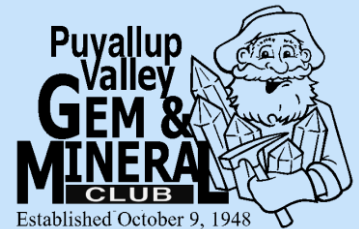


ROCK-A-TEER

Newsletter of the Puyallup Valley Gem & Mineral Club

Jillian Higgins



Issue 76

Volume 128

May

2024

THIS ISSUE

President's Perspective P.2
Field Trip Report P.2
May Club House Schedule P.3
Meet the Member -P.4
Club house Report P.4
Association's Director Report P.5
Field Trip Recap P.5
Club Show Update P.6
Article: Vredefort Impact Crater P.7-9
Community Supporters & Sunshine Report P.10
From the Bench & Mineral of the Month P.11
Local Area Shows P.12
2024 Show and Tell P.13
2024 Officers and Chairs P.14
Word Search P.15
Happy Birthdays P.15

P.O. BOX 134, PUYALLUP, WA 98371

PVGAMC@GMAIL.COM

WWW.PUYALLUPVALLEYGEMANDMINERAL.CLUB.COM

(253) 987-6751

President's Perspective

Tony Johnson

The first auction of the year was a big success. Thank you to Mark and Dennis for the great show they put on. Thank you to everyone who donated items. And a big thank you to everyone who brought in food. The funds generated will be going to the scholarship fund and we will be distributing those funds soon.

The Show is coming up in a little over a month. We are still short in several areas for volunteers. Those areas are:

- Kitchen
- Kids area
- Membership Desk

If you can help in any of these areas, please let us know at PVGAMC@gmail.com or check your email for updates. All volunteers get free admissions into the show!

Field Trip Report

May 18th – Snohomish River

Meeting place – 10:00 at Windmill Espresso 31721 US-2. Sultan, WA 98294

Hunting for – Jade, Serpentine, & Jasper

Tools you need – Rock hammer, shovel, hammer, hip waders, rubber boots for in the river and a backpack/bucket for your treasures

Access – Easy access, limited parking

Additional items – **Discover pass required** lunch/snacks and water, water, water. Dress in layers.

June 15th – Wild Turkey Mine

Meeting place – at the mine location – Nate White at nate.white77@gmail.com

Hunting for - Washington Serpentine

Tools you need - Rock hammer, shovel, pry bar, hammer, chisel and a backpack/bucket for your treasures

Access - this area is fairly easy to access

Additional items - lunch/snacks and water, water, water. Dress in layers

Please remember that even though we love to meet new people, fieldtrips are a member benefit and part of your membership dues covers you for injury liability.

Though injuries are rare, and we do everything we can to avoid them, we are going out into nature, and uncontrollable environment.

All individuals attending field trips will have to sign a release of liability, and if you are bringing guests, we will try to entice them into joining the club by having Membership applications available.

MAY 2024 CLUB HOUSE SCHEDULE

DATE	DAY	TIME	ACTIVITY	LOCATION	INSTRUCTOR
1	Wednesday	10:00AM-2:00PM	Members Open Access	Club House	Dennis Batchelor
		4:00PM-8:00PM	Members Open Access	Club House	Tony Johnson
2	Thursday	4:00PM-8:00PM	Members Open Access	Club House	Tony Johnson
3	Friday				
4	Saturday	10:00AM-2:00PM	Members Open Access	Club House	Tony Johnson
5	Sunday				
6	Monday	10:00AM-2:00PM	Members Open Access	Club House	Tasha Parker
7	Tuesday	4:00PM-8:00PM	Members Open Access - Beginner	Club House	Wes Ames
8	Wednesday	10:00AM-2:00PM	Members Open Access	Club House	Dennis Batchelor
		4:00PM-8:00PM	Wire Wrapping	Club House	Tony Johnson
9	Thursday	4:00PM-8:00PM	Members Open Access	Club House	Tony Johnson
10	Friday	6:00PM	Club Board Meeting	Fruitland Grange	Nate White
		7:30PM	Club Business Meeting	Fruitland Grange	Tony Johnson
11	Saturday	10:00AM-2:00PM	Wire Wrapping	Club House	Diane Stangland
12	Sunday				
13	Monday	10:00AM-2:00PM	Members Open Access	Club House	Tasha Parker
		7:00PM-8:00PM	Opal Club Business Meet.	Club House	Tony Johnson
14	Tuesday	4:00PM-8:00PM	Members Open Access - Beginner	Club House	Wes Ames
15	Wednesday	10:00AM-2:00PM	Members Open Access	Club House	Dennis Batchelor
		4:00PM-8:00PM	Opal Cutting	Club House	Tony Johnson
16	Thursday	4:00PM-8:00PM	Members Open Access	Club House	Tony Johnson
17	Friday				
18	Saturday	See Fieldtrip Report		Field Trip	Nate White
		10:00AM-2:00PM	Members Open Access	Club House	Tony Johnson
19	Sunday				
20	Monday	10:00AM-2:00PM	Members Open Access	Club House	Tasha Parker
21	Tuesday	4:00PM-8:00PM	Members Open Access - Beginner	Club House	Wes Ames
22	Wednesday	10:00AM-2:00PM	Members Open Access	Club House	Dennis Batchelor
		4:00PM-8:00PM	Members Open Access	Club House	Tony Johnson
23	Thursday	4:00PM-8:00PM	Members Open Access	Club House	Tony Johnson
24	Friday	7:30PM	Club Program Night	Fruitland Grange	Tony Johnson
25	Saturday	10:00AM-2:00PM	Gem Trees	Club House	Dana James
26	Sunday				
27	Monday	10:00AM-2:00PM	Members Open Access	Club House	Tasha Parker
28	Tuesday	4:00PM-8:00PM	Members Open Access - Beginner	Club House	Wes Ames
29	Wednesday		ANNUAL CLUB SHOW		
30	Wednesday		ANNUAL CLUB SHOW		
31	Wednesday		ANNUAL CLUB SHOW		

For questions about a specific class or event, contact the instructor

Dennis Batchelor (360) 870-8741	Wes Ames (253) 376-7871	Tony Johnson (253) 753-5938
Tasha Parker (206) 291-8068	Nate White (206) 349-7054	Jillian Higgins (253) 355-3146

*** **Members Open Access** is the time when members can use the saws and cabbng machines

This schedule is subject to change. Please check the club website for updated information.

MEET THE MEMBERS

Name: **Jennifer Barnstein**

Favorite Quote: "It is better to be silent and thought a fool than to open one's mouth and remove all doubt."
Abraham Lincoln

What are your skills/past experience with the rock Club or rock hounding?

I have participated in several field trips for general rockhounding, including some hard rock mining, and I volunteer for the Swiss Park Rock show every year to set up the electrical support system.

What is your favorite rock, mineral or gem? Berber agate is a favorite but also most types of moss agate.

What is your favorite thing to do with rocks, minerals or gems?

Pretty much slabbing anything that piques my interest, but also shaping and polishing larger pieces for display, either table top or for an outside rock garden.

What are your three favorite books/podcasts? Being a Sci-Fi fan I have (3) authors I like:

- Neal Asher,
- John Scalzi,
- Ian M. Banks
- If you're looking for rock related books: "Collecting Rock, Gems & Minerals" by Patti Polk, and of course "Gem Trails of Washington", Garret Romaine.

What is your favorite memory surrounding rockhounding/rocks in general?

Just seeking out new sites and finding the materials you're supposed to find there. The thrill of the hunt!

In your opinion, what is the best thing about the Puyallup Valley Gem & Mineral Club?

I like the fact we are reaching out to a younger segment of the population, and the energy and ideas they bring to the club.

In your opinion, where/how does the club need to improve?

I think it would do the Club good to have a series of documented methodologies for each of the lapidary specialties that are taught, for frequent reference as needed. On line for members! Maybe a solidly documented history of the club, including mergers with other clubs. Can't know where you're going if you don't know where you've been!

What are three (3) things people might not know about you?

- I have actually travelled a great deal, having been to 11 different countries or so by now.
- I have been on several river rafting trips, a couple up to class 3 rapids, if I remember correctly.
- I had been a member of a boys' choir in my youth.

What is your greatest accomplishment?

So far it seems I haven't screwed up my kids!

Clubhouse report

Tony Johnson

Everything at the clubhouse is going well. We are starting to see an increase in the attendance of classes, lots of new members, same regulars. We are having a lot of drop ins. Please remember that if you have not scheduled in advance, there may already be a full house and you will not have a machine to use. It doesn't take much time and help inform the instructors of how many members are coming on any given night. Its good for you and its good for us, so please make sure you are scheduling when you can.

Associations Director Report

Hello fellow Rockhounds and Pebblepups.

I hope all is well and you have been able to enjoy some rocking adventures.

The Washington State Mineral Council is in the process of renewing the Walker Valley lease with the state DNR. Hopefully if everything goes as planned it will be renewed on June 1. On another note the council has elected a new slate of officers and I am it's new vice-president.

On the federal level there is a bill S. 4132 that has been introduced to the Senate Committee on Energy and Natural Resources on April 26th. The bill seeks to create the Chuckwalla Natural Monument and expand Joshua Tree National Park. The committee will consider it and decide whether or not to introduce the bill to the Senate floor. As it stands now it has a has a 2% chance of being enacted. A similar bill H.R. 8031 has been introduced to the Houses Committee of Natural Resources. The bills were introduced to the Senate by Senators Alex Padilla and Laphonza Butler and to the House by Representative Raul Ruiz. They have also asked President Biden to use his authority under the Antiquities Act of 1906 to designate the monument.

So you may ask why am I worrying about something going on in California, well let me tell. What is going to be included in this monument are acres of BLM land that is some of the best rockhounding areas in southern California. If it goes through all rockhounding activities will no longer be allowed. We seem to be losing more and more areas to do the thing we love best. I will be keeping a close eye on what is going on with these two bills and keep you informed.

Respectfully submitted by

Mark Baumann
Associations Director

CLUB SHOW UPDATE

Our annual club show is kicking off the first weekend in June. The dates and times are May 31st from 12:00 – 5:00, June 1st from 10:00 – 5:00 and June 2nd from 10:00 to 3:00.

So far, we have had an overwhelmingly positive vendor turnout with 46 vendors, both inside and outside agreeing to attend. There are multiple new vendors who are excited to see what our show is like as they have heard many great things.

We are back to full show with Kids area, outside sales, raffle, inside sales and silent auction, demonstrators, kitchen, Geode cracking, and hourly giveaways. We have several opportunities for volunteering still available, so if you are interested, please contact the club at PVGAMC@gmail.com to see if the times work for you. Thank you to everyone who has signed up for a spot or ten. It really makes a huge difference.

If you would like any of your clubhouse hands on items (intarsia, cabochons, wire wrapping, gem trees, fire agates, Viking knit, wire weaving, etc.) featured in our display box at the show, please bring them to Swiss park starting Thursday morning and we will get them labeled and set on display. We are also looking for field trip finds, opals, and Ellensburg Blues. We will accept and add items to the display the whole weekend but you might not get a label after Thursday.

If you can stick around after the show closes on Sunday, we could use all the help loading everything back up. Take down usually is faster than setup, but as we all know, the more help we get the faster it goes for everyone. Many hands make light

Field Trip Recap

Nate White

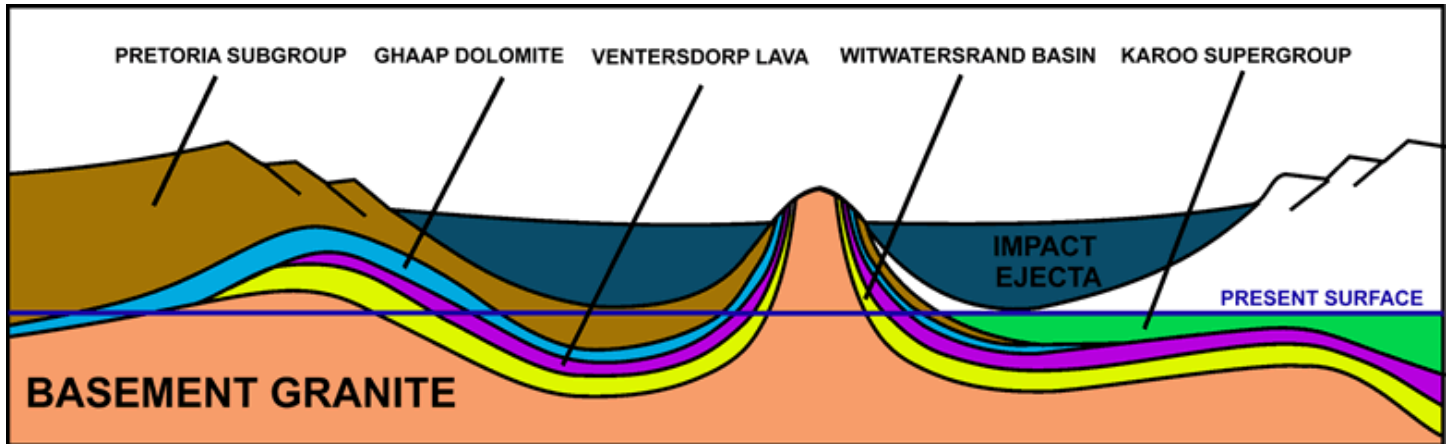
Saddle Mountain/ diatomaceous earth site.

The weather in the morning started out a little bit cold, but it was perfect for the afternoon. We didn't have any rain pretty much the whole day. It was not until later in the day that it started raining on the way home. We had about 19 cars and around 45 to 50 people. All had fun finding all kinds of different treasures some found big pieces of wood and limb cast. It was a great day and many people were able to see all different kinds of colors and types of petrified.

Vredefort Impact Crater

The largest impact structure with visible evidence on Earth's surface.

Article by: [Hobart M. King, PhD, RPG](#)



Vredefort Crater cross-section: This cross-section shows the structure of the Vredefort Impact Crater at a time shortly after it was formed. The rocks of the Witwatersrand Basin, Ventersdorp Lava, Ghaap Dolomite, and Pretoria Subgroup were originally deposited in a nearly horizontal position but were folded and deformed by the impact. The blue horizontal line represents the present land surface, which was produced by deep erosion of the crater. Rocks of the Karoo Supergroup were deposited after the impact and hide the southeastern half of the structure from today's surface view. This image was created by Oggmus and is used here under a [Creative Commons license](#).

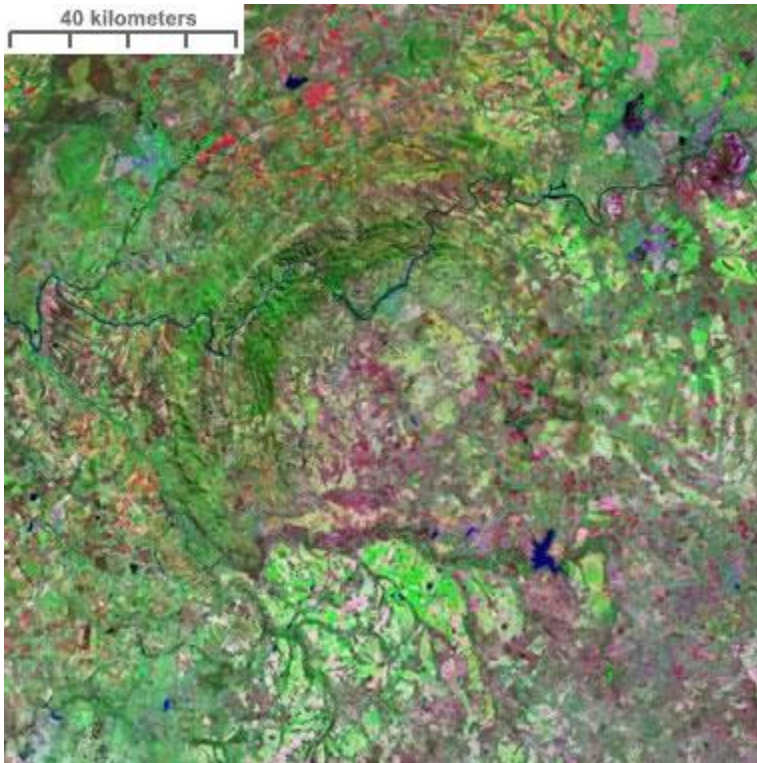


Map of Vredefort Crater: Map showing the approximate footprint of Vredefort Crater in the country of South Africa. The dotted line marks the approximate location of the original crater rim, which has been obscured by erosion in the northwest and covered by sediments in the southeast. The feature marked "Vredefort Dome" is an area of uplifted strata in the center of the crater. This image was created by Oggmus and is used here under a [Creative Commons license](#).

The Vredefort Impact Crater was formed when an asteroid struck Earth about two billion years ago in an area that is now the country of South Africa. At the time of formation, the crater is believed to have been about 300 kilometers across.

Since then, the crater and its ejecta have been removed by weathering and erosion. The visible evidence that remains today includes: A) deformed rock units that were once below the crater's floor; B) small-scale impact evidence such as transformed mineral structures and shatter cone structures; and, C) a dome of uplifted rock that once formed a central peak within the crater.

With an estimated original diameter of 300 kilometers, the Vredefort Impact Crater is the largest asteroid impact structure that still has visible evidence at Earth's surface. It is also the second-oldest impact structure with visible evidence at Earth's surface. Only the Suavjärvi Crater in Russia is older.



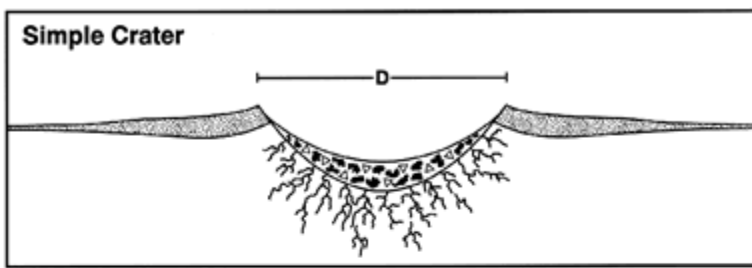
Landsat image of Vredefort Dome: A Landsat GeoCover image of the Vredefort Dome, the central portion of the Vredefort Impact Crater of South Africa. ([Larger Image of Vredefort Dome](#))

A core of basement granite marks the center of the Vredefort Crater. This core is surrounded by inclined rock units that dip away from the granite core in all directions to form a structural dome. This dome-shaped feature is about 70 kilometers in diameter and is known as the "Vredefort Dome."

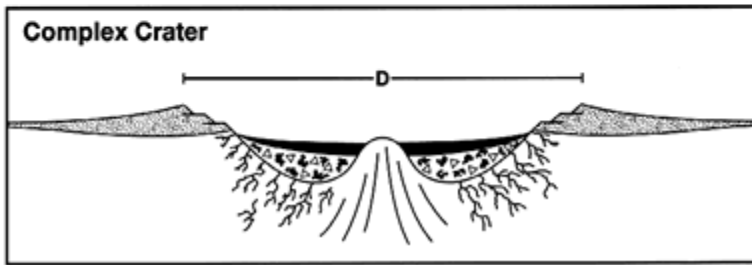
Dipping rock units in the northwestern portion of the dome form a semicircular pattern of surface ridges that can be recognized on [topographic maps](#) and [satellite images](#). The southeastern portion of the dome is not visible because it has been covered by sediments of the Karoo

Supergroup.

You can clearly see parts of the northwestern half of the Vredefort Dome in the Landsat image on this page. It can be recognized as a roughly semicircular pattern of concentric ridges. The Vaal River can be seen traversing the northern part of the structure. In some areas the course of the river forms an arc in map-view where it is confined to a valley between the uplifted ridges. [Enlarge the Landsat image](#) for a detailed view.



- △ Breccia
- Impact melt
- Impact ejecta
- Fractured bedrock
- Central peak uplift



Complex impact crater: The Vredefort Impact Crater is a complex crater. In the formation of a simple crater, a bowl-shaped depression is produced when an impact pulverizes the target rock and blasts much of it out over the surrounding terrain. In a complex crater, a central uplift is formed in the instant after the impact, when the material in the bottom of the crater attempts to return to a state of gravitational equilibrium. Public domain image created by NASA.

Impact craters range from small simple craters to larger complex craters. Simple craters are bowl-shaped depressions formed when the force of an impact breaks up the target rock and ejects it out over the surrounding land (see illustrations on this page).

Complex craters have additional structures that might include: A) a central uplifted dome; B) a shallow, flat floor covered with infallen ejecta; C) a concentric ring of ridges around the central uplift; and, D) terraced rims.

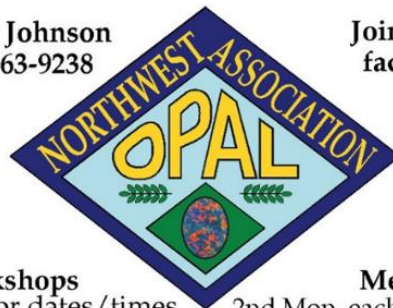
The Vredefort Impact Crater is a complex crater. It may have had all of these features when it formed, but they have since been weathered and eroded away. Today it still has a central uplifted dome surrounded by a concentric ring of ridges. These are visible in the deformed bedrock that was once below the original crater floor.

The asteroid that produced the Vredefort Crater is thought to have been between about 5 and 10 kilometers in diameter. The reason that such a small asteroid was able to produce a crater that is 300 kilometers in diameter was its velocity. It is thought to have been traveling at a rate of about 20 kilometers per second. The impact of a dense object at that velocity would have vaporized tens of cubic kilometers of rock in an energy-intensive explosion. This is how a small asteroid was able to produce such a large crater.

The Vredefort Dome has been selected as a [UNESCO World Heritage Site](#). The intent is to develop legislative, social, and physical provisions that will conserve and manage this unique natural history site for education and scientific study.

Tony Johnson
253-863-9238

Join us on
facebook



Workshops
call for dates/times

Meetings
2nd Mon. each month

FROM THE BENCH

Let's talk some more about Solder.

There are so many modes of solder it can be overwhelming and hard to decide what type you should be using. For myself, I say try them all and see which mode you like best. I have used liquid, paste, and rod, but I know many jewelers who swear by sheet or chip. In all of the options, the most important point is to use only as much as you need. Too little, and you will not have a complete seam or it may be too thin. Too much, and you might not be able to heat it all the way before melting the pieces you want to hold together or you will wind up with a lot of cleanup after you are done.

There are also different methods for soldering pieces together. Main point, the solder will flow to the hottest part first, so you want to really pay attention to evenly heating the part of your work you want to fuse. Don't just hold your torch on your solder or it will not flow anywhere (unless that is what you are going for), but use a circular motion to apply heat evenly for the part of the piece you are soldering, keeping in mind solder will flow towards the heat.

When soldering multiple seems, you want to use hard, to medium, to soft solder so you don't disrupt or "pop" a previously soldered seem when heating. This is also true if you are soldering different types of metal together, or the same piece multiple times.

SUNSHINE REPORT

With everything going on, we have started meeting again, but our attendance at the meetings is still low as members are staying safe. As a group we need to bring to eachother's attention members who need healing thoughts or prayer sent their way.

If you know of anyone else who needs to be recognized in next months Sunshine Report , please email or call Tony Johnson at ynotopals@outlook.com (253) 863-9238

You Know You are Having an Interesting Rockhounding Experience When...

1. The strap on your tote bag packed with the valuable finds you toiled so hard for breaks, spilling the contents under all that ground growth and clutter.
2. Your favorite dig hole has been visited earlier and you spend most of an hour of valuable time clearing the backfill. (More aerobics...)
3. You realize number 14 above is not nearly as bad as when said hole is temporarily below the local water table.

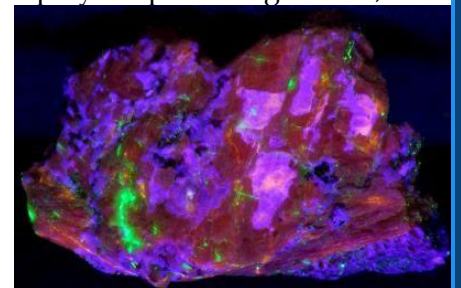
COMMUNITY SUPPORTERS

 <p>SOUTH HILL RV SALES <i>Family Owned & Operated</i></p>	<p>South Hill RV Sales</p> <p>Offering the highest rated starter, midline, and high end towables and RV's at the lowest prices which has made us a top volume dealer in Washington state.</p> <p>12414 Meridian East, Puyallup 98373 253-435-7751 or 866-435-7751 www.southhillrv.com</p>
 <p>RICE MUSEUM OF ROCKS & MINERALS</p>	<p>Rice Museum of Rocks & Minerals</p> <p>To engage, inspire, and educate generations on the splendor and complexity of our Earth.</p> <p>26385 NW Groveland Dr., Hillsboro, OR 97124 503-647-2418 Info@ricenorthwestmuseum.org www.ricenorthwestmuseum.org</p>
<p>H & I Lapidary</p>	<p>Amber, Jewelry, Beads, Findings, Gemstones, Slabs, Rough Material, Fossils, and Aussie items.</p> <p>Mike and LaVon Siperek (253) 531-7294 4203 E 99th Street, Tacoma, WA 98446 Yankees_Diesel@comcast.net</p>

MINERAL OF THE MONTH



Look at this crazy conglomerant of amazing minerals. Have you ever seen anything like this before? Whats better, it glows some many cool colors under UV lights (check out the image below). What is this is a wonderful mineral called Bustamite and it is a calcium manganses inosilicate (chain silicate). What is so amazing about this mineral is that depending on the temperature in which it forms, it can actually be a totally different mineral. Bustamite is the high-temperature polymorph of magnesium, zinc and iron (along with silica) and the low-temperature form is call Johansenite. Often you will find Bustamite with a metallic mineral called Galena (which is showin above). Bustamite is a light pink to brownish red depending on the amount of iron it contains. As with many minerals, long term exposure to sunlight (UV rays) will wash out the color in this mineral. It can be found in Mexico, Australia, and New Jersey. Bustamite forms in a mix of both volcanic and sedimentary origins, which is the first of this formation I have every heard of. Bustamite has been known to be faceted, specifcly minerals found in Australia, but they are typically small and contain inclusions.



Local Area Shows for 2024

DATE & TIME	CLUB	SHOW	LOCATION
May 2024 4th 10am—5pm 5th 10am—5pm	Everett Rock and Gem Club	69th Annual show	Evergreen State Fairgrounds 18359 Cascade View Drive Monroe, WA.
May 2024 4th 9am—5pm 5th 10am—4pm	Umpqua Gem & Mineral Club	52nd Annual Show “One More Rock”	Douglas County Fairgrounds 2110 Frear Ave, I-5 Exit 123 Roseburg, OR
May 2024 10th 10am - 6pm 11th 10am - 5pm 12th 10am - 4pm	Hatrockhounds Gem & Mineral Society Host 2024 NFMS	\$5/ \$12 for all 3 days Natures Treasures Underfoot	Eastern Oregon Trade & Event Center 1705 East Airport Road Hermiston OR
May 2024 10th 10am - 8pm 11th 10am - 6pm 12th 10am - 5pm	BC Rock and Gem show	Treasures of the Earth Gold, Silver & Copper Explored	Chilliwack Heritage Park 44140 Luckakuck Way Chilliwack, BC
May 2024 11th 10am - 6pm 12th 10am - 4pm	Bozeman Gem & Mineral Club	Annual Rock Show \$3 adults, 10 & under free w/adult	Gallatin County Fair Grounds 901 N. Black, Bldg. #1 Bozeman, MT
May 2024 18th 9am—5pm 19th 10am—4pm	Butte Mineral and Gem Club	Annual Show \$3 adults, 12 & under free w/Adult	Butte Civic Center Annex 1340 Harrison Avenue Butte MT
May 2024 25th 9am - 6pm 26th 10am - 4pm	Clackamette Mineral & Gem Club	59th Annual Show	Clackamas County Fairgrounds 694 NE 4th Ave Canby, OR
May/June 2024 31st 12pm—5pm 1st—10am—5pm 2nd—10am—5pm	Puyallup Valley Gem and Mineral Club	Valley of the Gems	Swiss Park 9205 198th Ave. E. Puyallup, WA
June 2024 1st 10am—5pm 2nd 10am—4pm	North Idaho Mineral Club	Annual Show \$5 adults, 12 & under free w/Adult	Kootenai County Fairgrounds Jacklin Building 4956 North Government Way Coeur d'Alene ID
June 2024 13 through 16 Thurs—Sat 9am—5pm Sun 9am—4pm	Prineville Rockhound Pow Wow	Annual Jewelry, Gem, and Mineral Show \$10 field trips/person	Crook County Fairgrounds 120 S. Main St. Prineville, OR
June 2024 14th 10am—5pm 15th 9am—5pm 16th 10am—4pm	Lower Umpqua Gem & Lapidary Society	Annual Rock and Gem Show	Reedsport Community Building 451 Winchester Avenue Reedsport OR
June 2024 22nd 10am—6pm 23rd 10am—5pm	Bitterroot Gem And Mineral Society	Treasures of the Universe 19th Annual Gem show \$3/children under 12 free	Ravali County Fairground Farmer's State Bank Event Bldg 100 Old Corvallis Rd Hamilton, MT
June 2024 28th 10am - 5pm 29th 10am - 5pm 30th 10am—3pm	Mt Hood Rock Club	Mt Hood Rock Club's Rock and Gem Show	Kliever Memorial Armory 10000 NE 33rd Dr. Portland, OR., 97211
June 2024 29th 10am - 5pm 30th 10am - 5pm	Cascade Mineralogical Society	Annual show	Kent Commons 525 4th Ave N Kent, WA
July 2024 20th 10am—5pm 21st 10am—5pm	Darrington Rock & Gem Club	Rock and Gem Show and Sale Field trip Saturday	Mansford Grange 1265 Railroad Avenue Darrington, WA, (behind IGA)
July 2024 26th 9am—6pm 27th 9am—6pm 28th 9am—5pm	Washington Agate and Mineral Society	2024 Rock & Gem Rendezvous	Tenino City Park 300 Park Ave W Tenino WA

2024 SHOW & TELL THEMES and PROGRAM NIGHT EVENTS

MEETING	DATE	SHOW & TELL THEME	PROGRAM NIGHT EVENT
January - 1st Meeting	January 12, 2024	Crystals or any field trip finds	
January - 2nd Meeting	January 26, 2024	Last Years Purchase or any field trip finds	Field Trips
February - 1st Meeting	February 9, 2024	Red & Pink or any field trip finds	
February - 2nd Meeting	February 23, 2024	Hearts Made of Stone or any field trip finds	Carl Carlson
March - 1st Meeting	March 8, 2024	Green or any field trip finds	
March - 2nd Meeting	March 22, 2024	Geodes any field trip finds	Jerry's Rock Shop
April - 1st Meeting	April 12, 2024	Obsidian or any field trip finds	
April - 2nd Meeting	April 26, 2024	No Show & Tell	Auction/Potluck
May - 1st Meeting	May 10, 2024	Thundereggs or any field trip finds	
May - 2nd Meeting	May 24, 2024	No Show & Tell	Fluorescent Minerals
June - 1st Meeting	June 14, 2024	Any Agates or any field trip finds	
June - 2nd Meeting	June 28, 2024	No Show & Tell	Tailgate Party @ Grange Parking Lot
July - 1st Meeting	July 12, 2024	Metals or any field trip finds	
July - 2nd Meeting	July 26, 2024	No Show & Tell	Jerry's Rock Shop
August - 1st Meeting	August 9, 2024	Jaspers or any field trip finds	
August - 2nd Meeting	August 24, 2024	No Show & Tell	Picnic & Tailgate Party at club house on Saturday
September - 1st Meeting	September 13, 2024	Gemstones or any field trip finds	
September - 2nd Meeting	September 27, 2024	No Show & Tell	Mini Demonstration Day
October - 1st Meeting	October 11, 2024	Opals or any field trip finds	
October - 2nd Meeting	October 25, 2024	No Show & Tell	Auction/Potluck
November - 1st Meeting	November 8, 2024	Serpentine/Jade or any field trip finds	
November - 2nd Meeting	November 22, 2024	No Show & Tell	BINGO Night
December - 1st Meeting	December 14, 2024	No Show & Tell	Holiday Banquet/Officer Installation on Saturday
December - 2nd Meeting	No Meeting	No Show & Tell	

2024 Elected Officers

Title	Name	Phone	Email
President:	Tony Johnson	(253)863-9238	ynotopals@outlook.net
Vice President:	Nathan White	(206)349-7054	nate.white77@gmail.com
Secretary:	Patti Dailey-Shives	(253)678-0029	pattidailey28@gmail.com
Treasurer:	Jillian Higgins	(253)355-3146	J.Y.Higgins@gmail.com
Association Director:	Mark Baumann	(253-310-5891	rocksnreptiles4me@gmail.com
1 Year Director:	Richard Yang	(208)596-8340	ryang0711@gmail.com
2 Year Director:	Tasha Parker	(206)291-8068	surfange1830@gmail.com
1 Year Trustee:	Dennis Batchelor	(360)870-8741	hobbyhorse51@gmail.com
2 Year Trustee:	Glenn Rodrick	(253)531-4062	gtrodi@comcast.net

2024 Committee Chairs

Title	Name	Phone	Email
Clubhouse Coordinator	Tony Johnson	(253)863-9238	ynotopals@outlook.net
Club Show Coordinator	Jillian Higgins	(253)355-3146	J.Y.Higgins@gmail.com
Field Trips Coordinator	Nathan White	(206)349-7054	nate.white77@gmail.com
Web Master	Jillian Higgins	(253)355-3146	J.Y.Higgins@gmail.com
Editor/Communications	Jillian Higgins	(253)355-3146	J.Y.Higgins@gmail.com
Membership	Jillian Higgins	(253)355-3146	J.Y.Higgins@gmail.com
Sunshine	Tony Johnson	(253)863-9238	ynotopals@outlook.net
Newsletter	Jillian Higgins	(253)355-3146	J.Y.Higgins@gmail.com
Mineral Council	Mark Baumann	(253-310-5891	rocksnreptiles4me@gmail.com



WASHINGTON STATE MINERAL COUNCIL

The Puyallup Valley Gem & Mineral Club is a member of the American Lands Access Association and the Washington State Mineral Council. You can find more information about the ALAA at: amlands.org or the WA Mineral Council at:

HAPPY BIRTHDAY

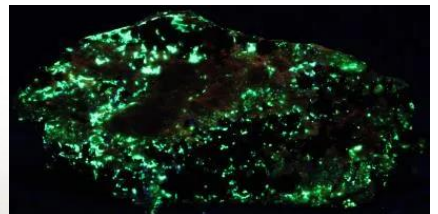
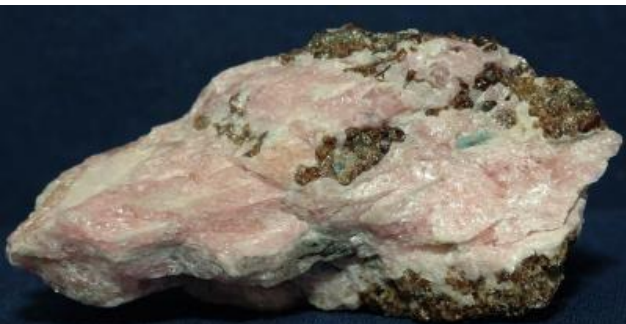
May 2024

Tamara Grunfelder – 1st
 Daniel Poore Jr. – 1st
 Laura Morrison – 2nd
 Andrew Quickenden – 2nd
 Patrick Bak – 3rd
 Robert Hampton – 3rd
 Maureen Hampton – 3rd
 Denyl Bledsoe – 6th
 Eric Kraft – 6th
 Seth Gregory – 7th
 Kathleen Stevenson – 7th
 Collin ORourke – 9th
 Jeremy Morita – 10th
 Wesley Ames – 11th
 Sherry Lawrence – 12th
 Teri McCormack – 13th
 Tian Ning – 15th
 John Skierski – 15th
 Christine Eberlein – 16th
 Justin Kohler – 16th
 Mary Drutis-Porter – 18th
 Bill Orvis – 18th
 Adam Sanchez – 18th
 Mike Siperek – 18th
 Allen Richardson – 19th
 Kaitlin Hochstrasser – 21st
 Sonara Hauser – 26th
 Michele Forsythe – 28th
 Zella Gregory – 28th
 Dominique Daliogne – 29th
 Jerry Rheault – 30th
 Joyce Bryant – 31st
 Lisa Roderques – 31st

WHAT'S IN A MINE

B C A R B O N D I O X I D E A K C
 O K L H G B I N E D R U B R E V O
 R C O A O A N O I T A M R O F K M
 E E A D I T N O I T A R O L P X E
 H N T V E M T G N I T R A P O B T
 O N R A E H A P U G N I L A E S H
 L O R N B I I D T E M A I G S T A
 E I E C C T N U T I C L F N M R N
 X T C E C C C S N H E G E I E A E
 P A O H E S A E A N S R N C L C N
 L M V Y S S S V I R E G U A T R O
 O A E O S H G L E Q F L O R I E T
 S L R A A U C D A I O T T B N P S
 I C Y F O N L A R E N I M T G P D
 V E T F I S S U R E J M I A U O N
 E R P O C K E T S G N I D A E H A
 S Y N C L I N E C N E D I S B U S

- | | | |
|-------------------|----------------|-----------------|
| 1. ADIT | 13. FISSURE | 24. PITCH |
| 2. ADVANCE | 14. FORMATION | 25. POCKETS |
| 3. ASSAY | 15. GANGUE | 26. RECLAMATION |
| 4. AUGER | 16. HEADING | 27. RECOVERY |
| 5. BOREHOLE | 17. HOPPER CAR | 28. SANDSTONE |
| 6. BRACING | 18. INCLINE | 29. SEALING |
| 7. CARBON DIOXIDE | 19. METHANE | 30. SHUTTLE |
| 8. CAVE IN | 20. MINERAL | 31. SMELTING |
| 9. CLAIM | 21. MINESHAFT | 32. SUBSIDENCE |
| 10. CROSSCUT | 22. OVERBURDEN | 33. SYNCLINE |
| 11. EXPLORATION | 23. PARTING | 34. VEIN |
| 12. EXPLOSIVES | | |



ROCK-A-TEER

Newsletter of Puyallup Valley

Gem & Mineral Club

P.O. Box 134

Puyallup, WA 98371